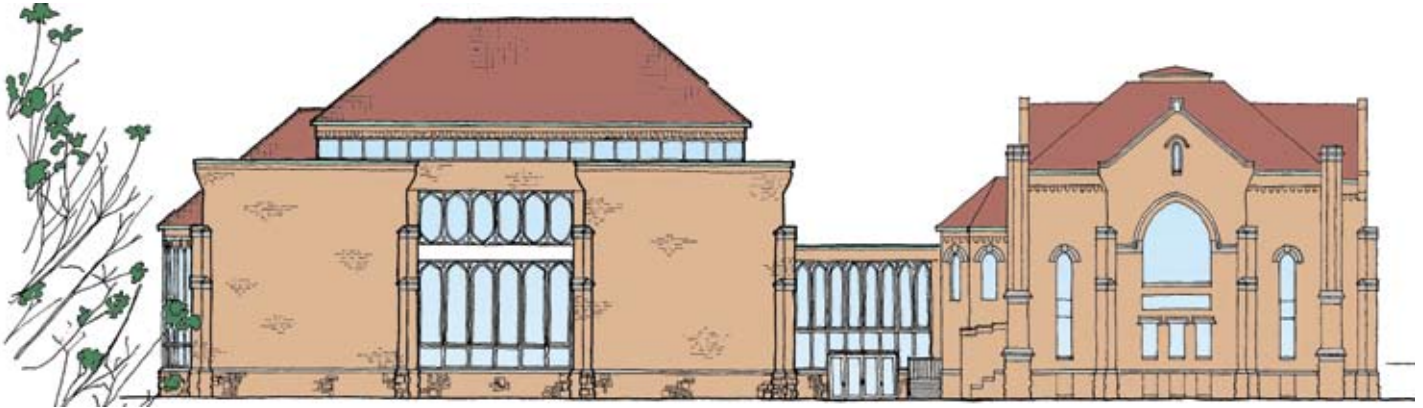


Light of the World Assembly of God Church

Rochester, NY



PROJECT STATISTICS

Client:

Light of the World Assembly of God Church

Cost:

TBD

Completion Date:

TBD

Passero Associates provided preliminary architectural and engineering services for a future 15,000 square foot 1,000-person sanctuary addition. The existing building that consists of a sanctuary, office and classroom space, will be redesigned to provide optimal classroom and office space.

SERVICES TO BE PROVIDED

- Architecture Design Services
- Mechanical, Electrical Design Services
- Engineering design for site layout, access and utilities
- Planning, zoning and town board approvals
- Construction Administration Services