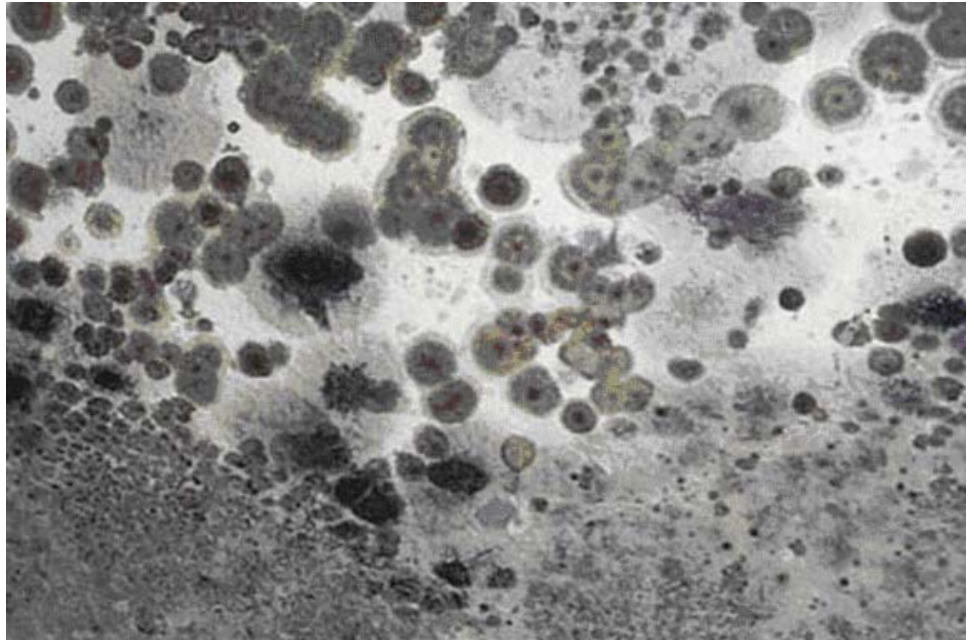


Mold Inspections



Passero Associates provides mold assessments including moisture/water intrusion evaluation, pre and post abatement bulk and air sampling, and evaluation of mold-impacted building materials and contents. Passero Associates generates comprehensive reports including observations, sampling data and evaluation, and mold abatement recommendations. Passero Associates currently provides mold assessment services to more than a dozen insurance companies, home inspectors as well as individual homeowners. Passero Associates mold consultants have the credentials and training for all levels of assessment which are completed under the direction of an Industrial Hygienist.

Helpful Links:

- Mold FAQ's (Frequently Asked Questions)
www.pmenv.com/pm_s_moldFAQs.htm
- EPA Mold Guidelines
epa.gov/mold/moldresources.html
- Mold in My Home Document
www.cal-iaq.org/MIMH_2006-06.pdf
- New York City Guidelines
www.nyc.gov/html/doh/html/epi/moldrpt1.shtml

For more information, please contact:

Peter Morton, CPG

Passero Associates

100 Liberty Pole Way

Rochester, NY 14604

Office: 585 325 1000

Direct: 585 760 8523

Fax: 585 325 1691

email: pmorton@passero.com

www.passero.com

Other Indoor Air Quality Services

Passero Associates staff have the expertise and experience to assess most indoor air quality concerns including mold, asbestos, lead paint, volatile organic compounds, sewer damage, smoke damage, biological hazards and many other related services.

